

**BASIC INFO**

START TIME 30-JUN-2011 2300LT (1900UTC)

SCHED LAU TIME 2315LT CASE III DEP LOC N2534E5659

EXP REC TIME 0050LT CASE III REC LOC N2519E5722

HOME FREQ 305AM TCN 71X ILS 11 LINK4 336

WX CLR SR 0528LT SS 1913LT TEMP 26C QNH 2993 WIND 298 12KTS SEA 2 NGT VSBY

**FLIGHT**

FLT	CS	T#	A/A	DLNK	LASER	WPN
Hawk 1	Hawk 1-1	211	11X	HK11	1688	9X,84E,WT,120C,DL,AFLIR,WT,84E,9X
	Hawk 1-2	212	12X	HK12	1688	9X,84E,WT,120C,DL,AFLIR,WT,84E,9X
	Hawk 1-3	213	13X	HK13	1688	9X,84E,WT,120C,DL,AFLIR,WT,84E,9X
	Hawk 1-4	214	14X	HK14	1688	9X,84E,WT,120C,DL,AFLIR,WT,84E,9X
Hawk 2	Hawk 2-1	215	21X	HK21	1688	9X,84E,WT,120C,DL,AFLIR,WT,84E,9X
	Hawk 2-2	216	22X	HK22	1688	9X,84E,WT,120C,DL,AFLIR,WT,84E,9X
	Hawk 2-3	217	23X	HK23	1688	9X,84E,WT,120C,DL,AFLIR,WT,84E,9X
	Hawk 2-4	218	24X	HK24	1688	9X,84E,WT,120C,DL,AFLIR,WT,84E,9X

**PACKAGE**

FLT	AC	NO.	TASK
Hawk 1	F/A-18C	4	Pinpoint Strike
Hawk 2	F/A-18C	4	Pinpoint Strike
Ford 1	F-15C	2	Escort
Ford 2	F-15E	2	Ground Attack
Ford 3	F-16C	2	EW/SEAD

**RADIO COMMS**

CH	CODE	AGCY	FREQ
1	Green 1	Marshal	305.00
2	Red 1	Strike	264.00
3	Red 2	Guardian	265.00
4	Red 3	Darkstar	256.00
5	Yellow 1	Hawk 1	254.00
6	Yellow 2	Hawk 2	250.00
7	Yellow 3	Hornet	270.00
8	Violet 1	Shell 1	257.00
9	Violet 2	Shell 2	255.00
10	Violet 3	Texaco	262.00
11	Violet 4	Arco	259.00
12	Orange 1	Devil	268.00
13	Orange 2	Chevy	269.00
14	Orange 3	Check	260.00
15	Blue 1	Raven	263.00
16	Blue 2	Dodge	261.00
17	Blue 3	Ford	267.00
18	Indigo 1	Trek	251.00
19	Indigo 2	Viper	253.00
20	Indigo 3	Colt	266.00

**FLIGHT PLAN (HAWK 1, 2)**

WP	NAME	TIME	SPEED	ALT	ACT
0	LAU	2315L			Launch
1	RV	2320L	0.60M	25K	Regroup
2	ROCK	2335L	0.75M	30K	Check in
3	ACT	2340L	0.60M	LLF	Descend
4	RED	2344L	0.60M	LLF	Decision
5	ENT	2345L	0.60M	LLF	Enter
6	POP	2347L	0.75M	LLF	Pop-up
7	ATT	2348L	0.95M	16K	Attack
8	TGT				Targets
9	EGR	0012L	0.80M	30K	Egress
10	WET	0015L	0.80M	30K	Fence out
11	REC	0050L			Landing



SUPPORT					
FLT	AC	TASK	A/A	CH	RMRK
Magic	E-2D	AWACS		2	Strike
Darkstar	E-3A	AWACS		4	Darkstar
Texaco	KC-135M	Refuel	53X	10	FL220
Arco	KC-130	Refuel	54X	11	FL180
Shell 1	S-3B	Refuel	51X	8	Standby
Shell 2	S-3B	Refuel	52X	9	Standby

ALT AFLD		
AFLD	FREQ	COOR
Khasab	124.350	N26°11' E56°14'

CODEWORD	
CODEWORD	INTERPRETATION
Action	Descend to 300 feet AGL
Prom Night	Enemy CAP flights absent

GROUP A TARGET COORDIATES (HAWK 1)						
NO	TYPE	COOR (PRES)	ELEV (FT)	TARGET	PEN	REMARK
A1	Building	N 27°40'13.70", E 54°22'52.19"	2636 ft	Airbase HQ	Y	East Sector
A2	Building	N 27°40'17.66", E 54°22'53.88"	2636 ft	CMD Center	Y	East Sector
A3	Radar	N 27°40'11.19", E 54°23'05.35"	2636 ft	EW Radar	N	East Sector
A4	Storage	N 27°40'09.38", E 54°22'58.81"	2636 ft	Weapon Store	Y	East Sector
A5	Tower	N 27°40'13.96", E 54°22'15.35"	2636 ft	Comm Tower	N	West Sector
A6	Plant	N 27°40'15.69", E 54°22'22.49"	2636 ft	Power Plant	N	West Sector
A7	Tank	N 27°40'11.61", E 54°22'28.45"	2636 ft	Oil Fuel	N	West Sector
A8	Tank	N 27°40'20.38", E 54°22'10.05"	2636 ft	Diesel Fuel	N	West Sector

GROUP B TARGET COORDIATES (HAWK 2)						
NO	TYPE	COOR (PRES)	ELEV (FT)	TARGET	PEN	REMARK
B1	Aircraft	N 27°40'17.04", E 54°22'44.08"	2636 ft	Awacs Plane	N	Middle Sector
B2	Aircraft	N 27°40'15.48", E 54°22'57.07"	2636 ft	Cargo Plane	N	East Sector
B3	Hangar	N 27°40'14.48", E 54°22'39.72"	2636 ft	F14 in Hangar	Y	Middle Sector
B4	Hangar	N 27°40'12.35", E 54°22'38.39"	2636 ft	F14 in Hangar	Y	Middle Sector
B5	Hangar	N 27°40'10.46", E 54°22'39.77"	2636 ft	F14 in Hangar	Y	Middle Sector
B6	Hangar	N 27°40'13.18", E 54°22'42.52"	2636 ft	F14 in Hangar	Y	Middle Sector

**NOTE**

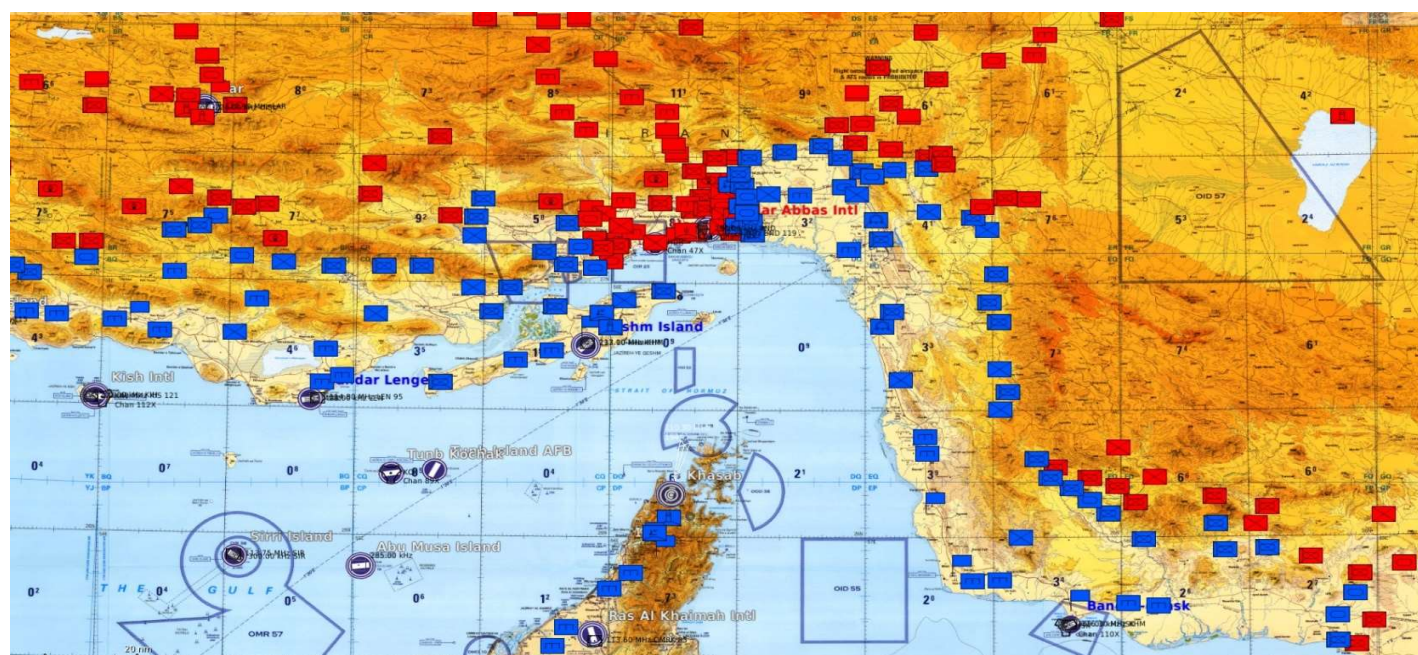
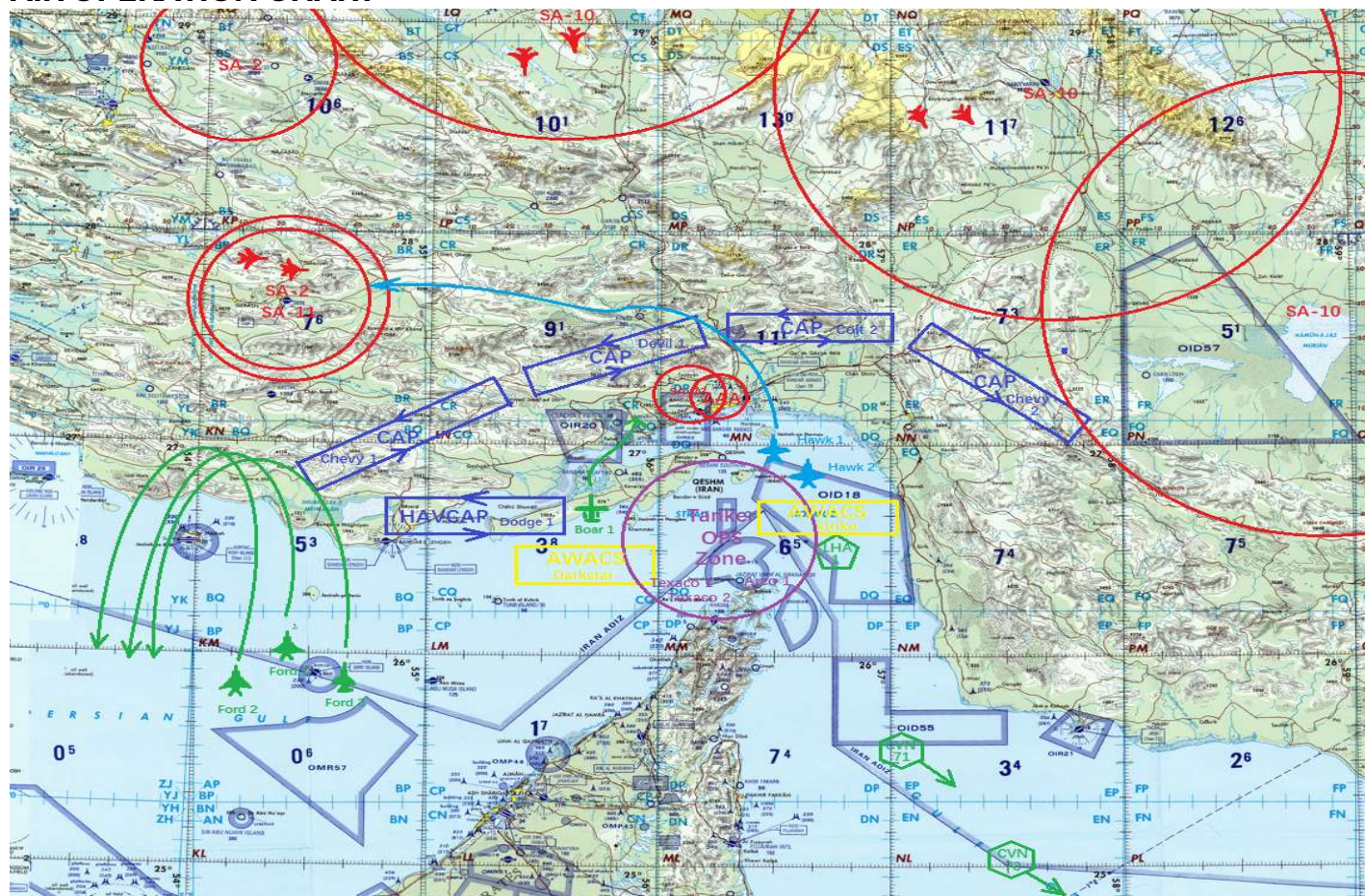
Group B Targets are not static; use AWW-13 datalink to search and destroy  
 For B3-B6 Targes, attack the F14 aircraft if it's outside the hangar  
 If no "Prom Night" signal from STRIKE in 10 minutes after reaching WP4, abort mission & RTB



The map displays the Persian Gulf region, including the Strait of Hormuz and the Persian Gulf. A flight path is indicated by a series of numbered circles (1 through 11) connected by lines. The path starts near Bandar Lengeh (Iran) and proceeds towards the Oman coast. Key geographical features include the Strait of Hormuz, the Persian Gulf, and the surrounding landmasses of Iran, Iraq, and Oman. Various labels for islands, cities, and maritime zones are visible on the map.

**NOTE: WP3-WP6 LOW-LEVEL FLY**

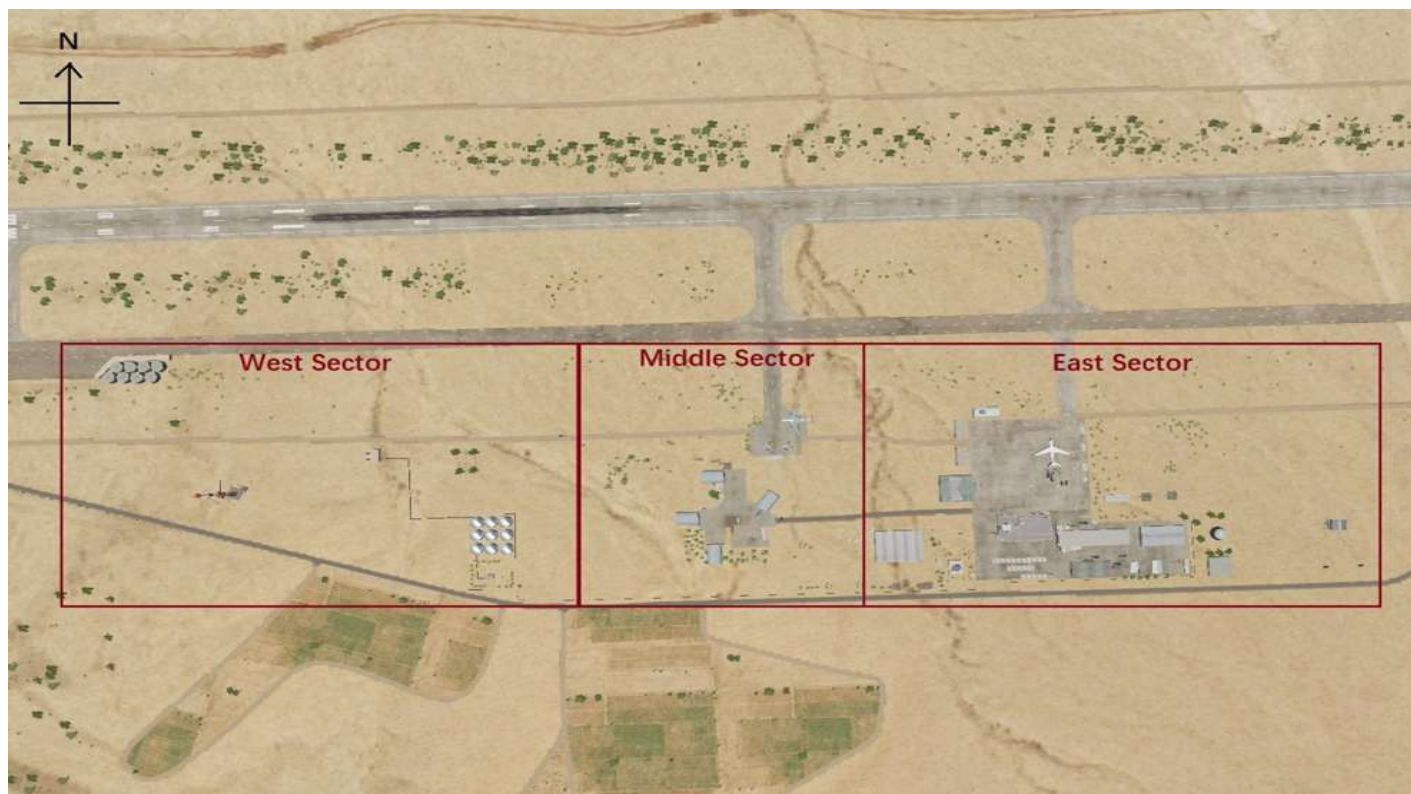




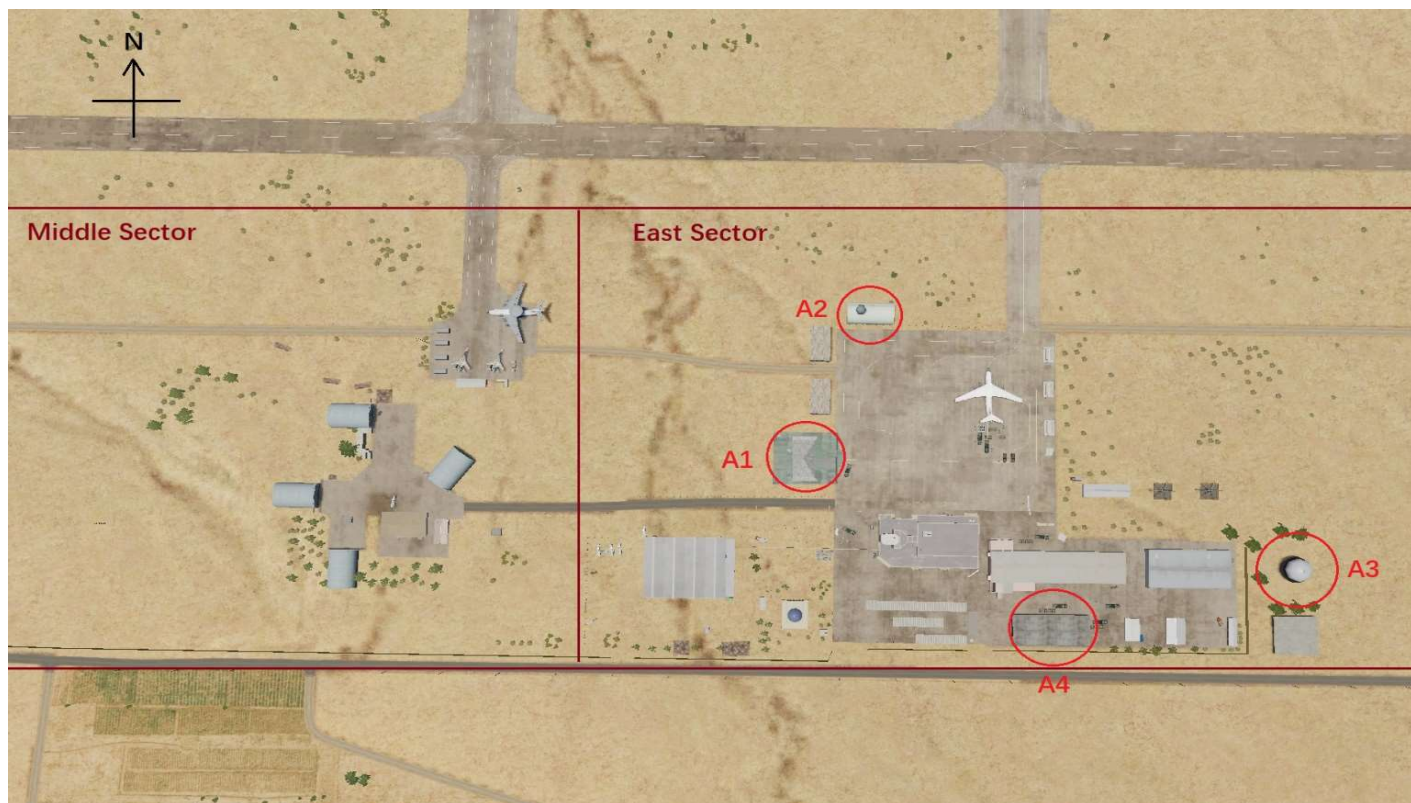




## TARGET SATELLITE IMAGES



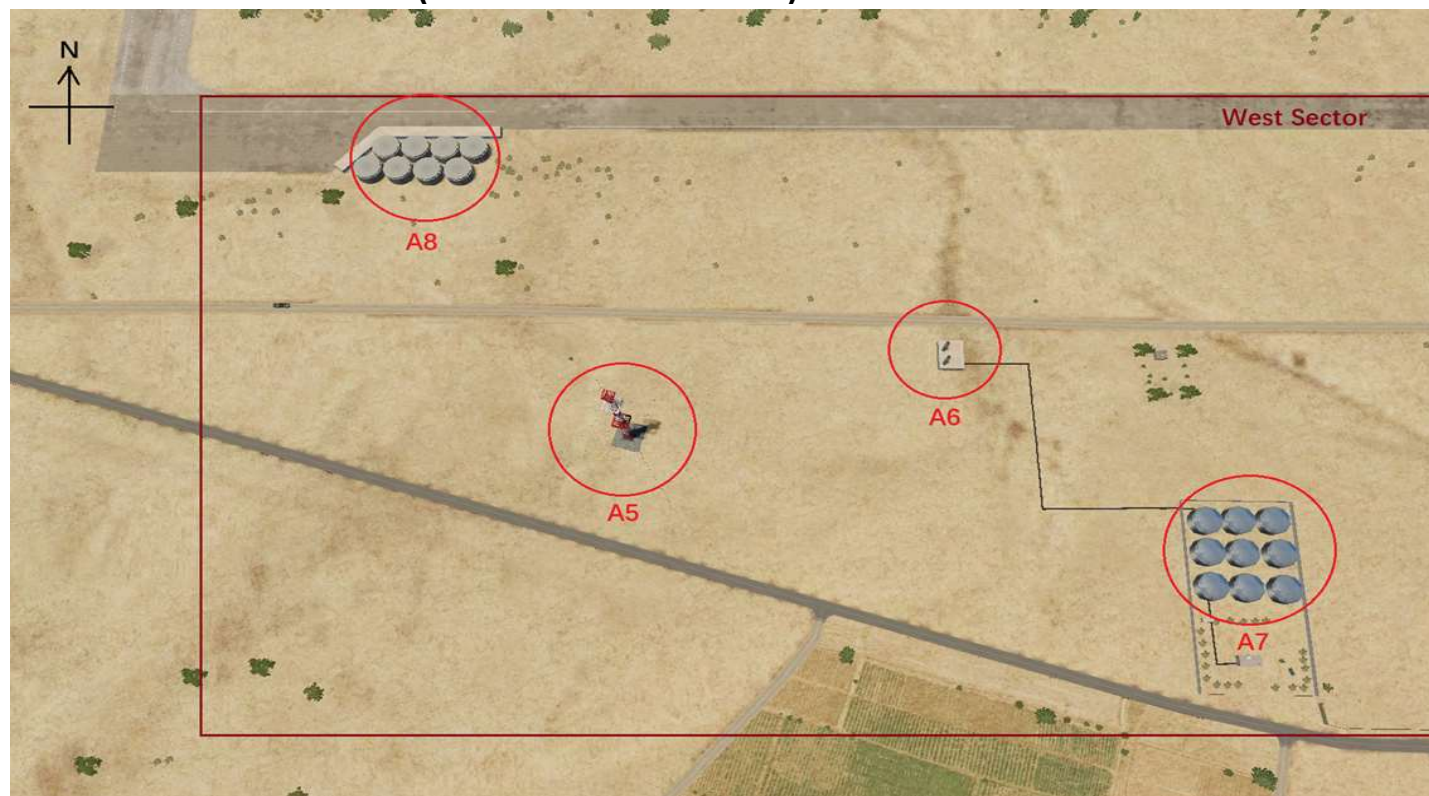
## TARGETS ALPHA GROUP (PART 1 EAST SECTOR)







## TARGETS ALPHA GROUP (PART 2 WEST SECTOR)



## TARGETS BRAVO GROUP (MIDDLE SECTOR & EAST SECTOR)

